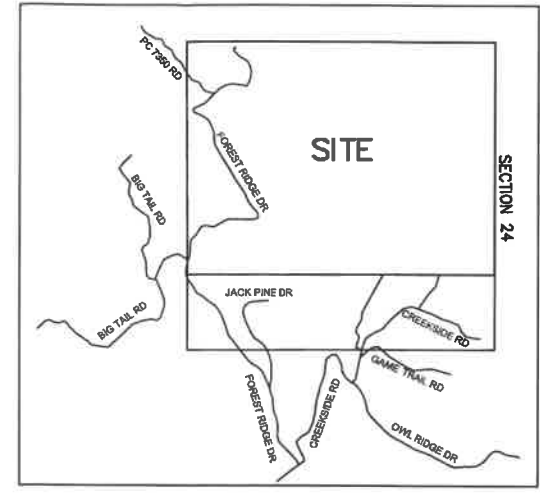
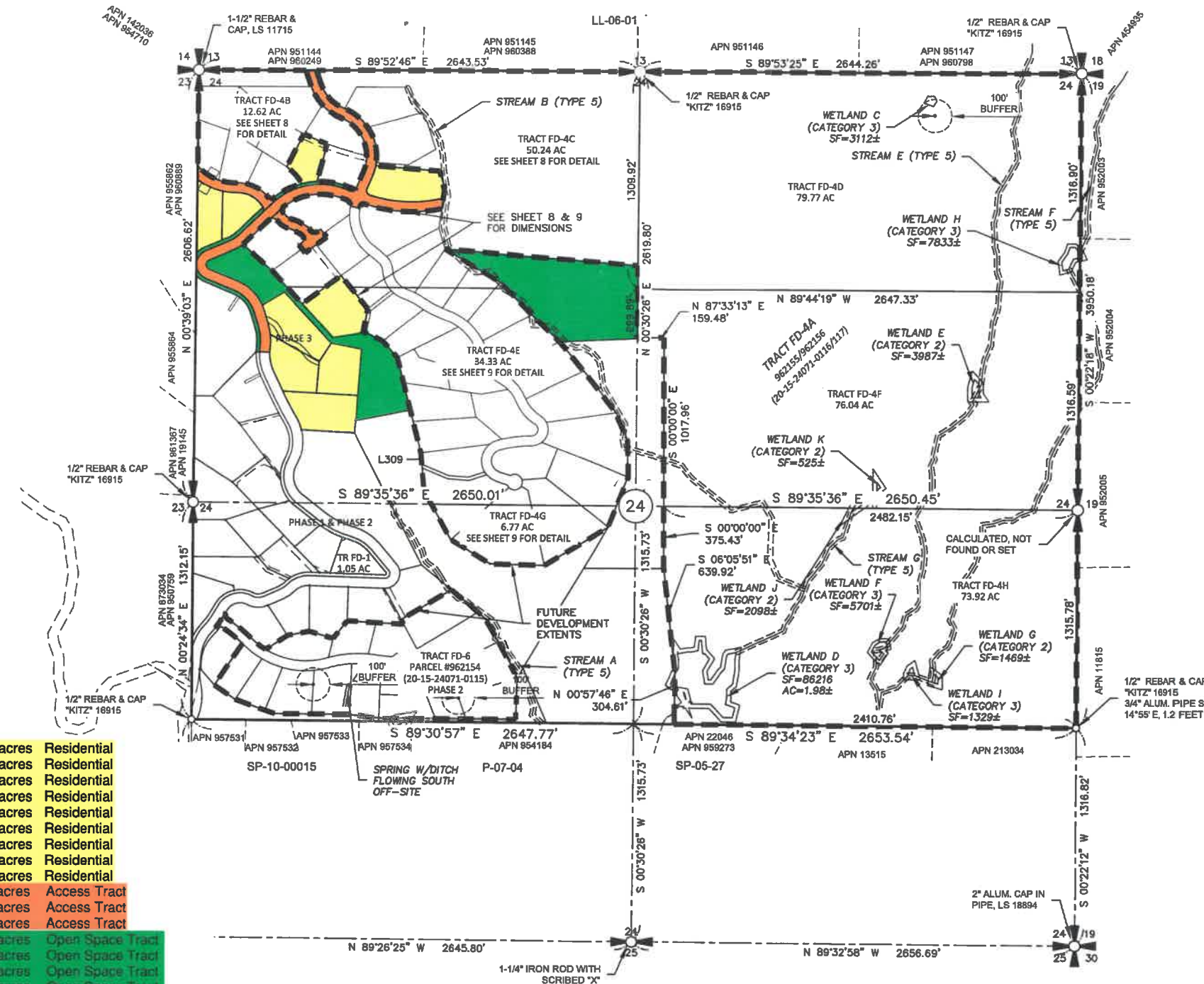


OPEN SPACE COMPLIANCE MAP

FOREST RIDGE - PHASE III PERFORMANCE BASED CLUSTER PLAT A PORTION OF SECTION 24, TOWNSHIP 20 N., RANGE 15 E. KITITAS COUNTY, WASHINGTON

LP-08-00014



VICINITY MAP
N.T.S.

LEGEND

- SECTION CORNER, AS NOTED
- QUARTER CORNER, AS NOTED
- CENTER OF SECTION, AS NOTED
- FOUND 5/8" IRON ROD & CAP, LS
- SET 5/8" IRON ROD & CAP, LS 45503

Lot 35	1.99 acres	Residential
Lot 36	1.60 acres	Residential
Lot 37	1.58 acres	Residential
Lot 38	1.94 acres	Residential
Lot 39	1.26 acres	Residential
Lot 40	1.03 acres	Residential
Lot 47	1.01 acres	Residential
Lot 53	1.92 acres	Residential
Lot 82	2.01 acres	Residential
Tract AC-2	4.52 acres	Access Tract
Tract AC-3	0.69 acres	Access Tract
Tract AC-4	0.58 acres	Access Tract
Tract OS-7	0.31 acres	Open Space Tract
Tract OS-8	0.23 acres	Open Space Tract
Tract OS-9	0.24 acres	Open Space Tract
Tract OS-10	4.98 acres	Open Space Tract
Tract OS-11	8.40 acres	Open Space Tract
Tract FD-4B	12.62 acres	Future Development Tract
Tract FD-4C	50.24 acres	Future Development Tract
Tract FD-4D	79.77 acres	Future Development Tract
Tract FD-4E	34.33 acres	Future Development Tract
Tract FD-4F	76.04 acres	Future Development Tract
Tract FD-4G	6.77 acres	Future Development Tract
Tract FD-4H	73.92 acres	Future Development Tract

Residential Total: 14.34 acres
 Access Tract: 5.79 acres
 Open Space Tract Total: 14.16 acres
 Future development Tracts Total: 333.69 acres

AUDITOR'S CERTIFICATE _____
 FILED FOR RECORD THIS ____ DAY OF ____ 20__ AT ____ M.
 IN BOOK ____ OF ____ AT PAGE ____ AT THE REQUEST OF

 DUSTIN L. PIERCE
 SURVEYOR'S NAME

 JERALD V. PETTIT
 County Auditor Deputy County Auditor

Encompass
 ENGINEERING & SURVEYING

Western Washington Division
 165 NE Juniper Street, Suite 201 • Issaquah, WA 98027 • Phone: (425) 392-0250
 Eastern Washington Division
 407 Swiftwater Blvd. • Cle Elum, WA 98922 • Phone: (509) 674-7433

FOREST RIDGE - PHASE III PERFORMANCE BASED CLUSTER PLAT		
PREPARED FOR FRPP PHASE I, LLC A PORTION OF SECTION 24, TOWNSHIP 20 NORTH, RANGE 15 EAST, W.M.		
KITITAS COUNTY	WASHINGTON	
DWN BY T.J.S.	DATE 12/2021	JOB NO. 18069
CHKD BY M.K.K./D.L.P.	SCALE 1" = 500'	SHEET 3 OF 9

